

# VOLVO CONSTRUCTION EQUIPMENT MATRIS REPORT

Machine model EC250E	SerialNo 310117	Operating Hours 2814.2	Reading Date 6/8/2018
Company name Asset Appraisal Services	Dealer	Report Issuer	
Contact name	Technician ERIROUT	Primary Application Civil engineering/Heavy construction	
Site	Workorder	Ground Condition	

MATRIS Reading, Summary / Recommendation



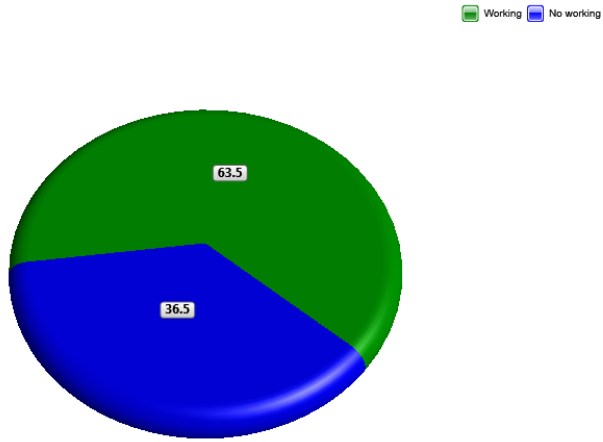
Machine model	SerialNo	Operating Hours	Reading Date
EC250E	310117	2814.2	6/8/2018

Main equipment	Type	Equipment
	Track chain	
	Hydraulic Fluid	
	X3 piping	
	Main Attachment	
	Attachment Interface	
	X1 Piping	
	Hose Rupture Valve on Boom	
	Hose Rupture Valve on Arm	
	X1 return filter	



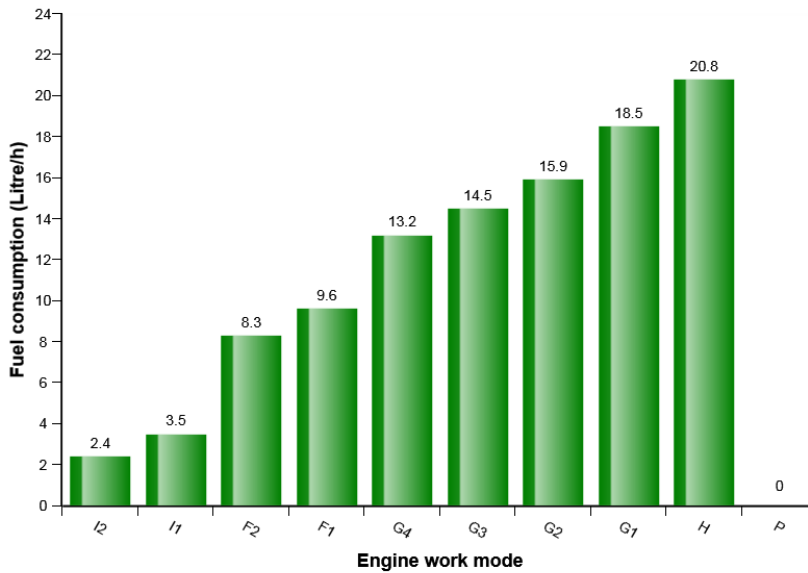
Machine model	SerialNo	Operating Hours	Reading Date
EC250E	310117	2814.2	6/8/2018

### Machine utilization (%)



Total logged time (h) = 2815.3

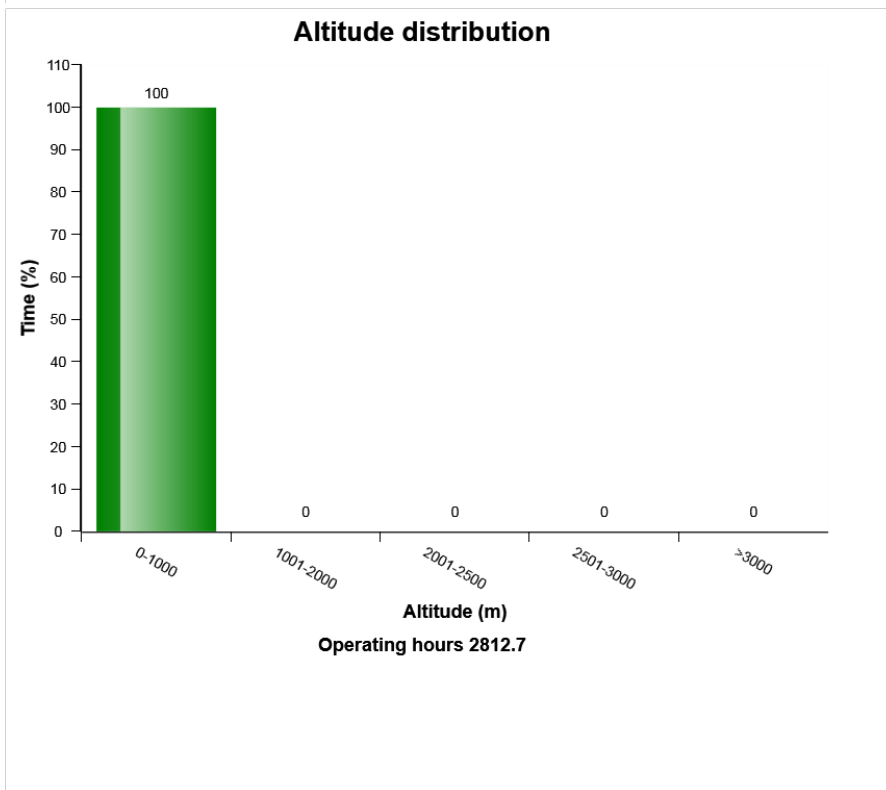
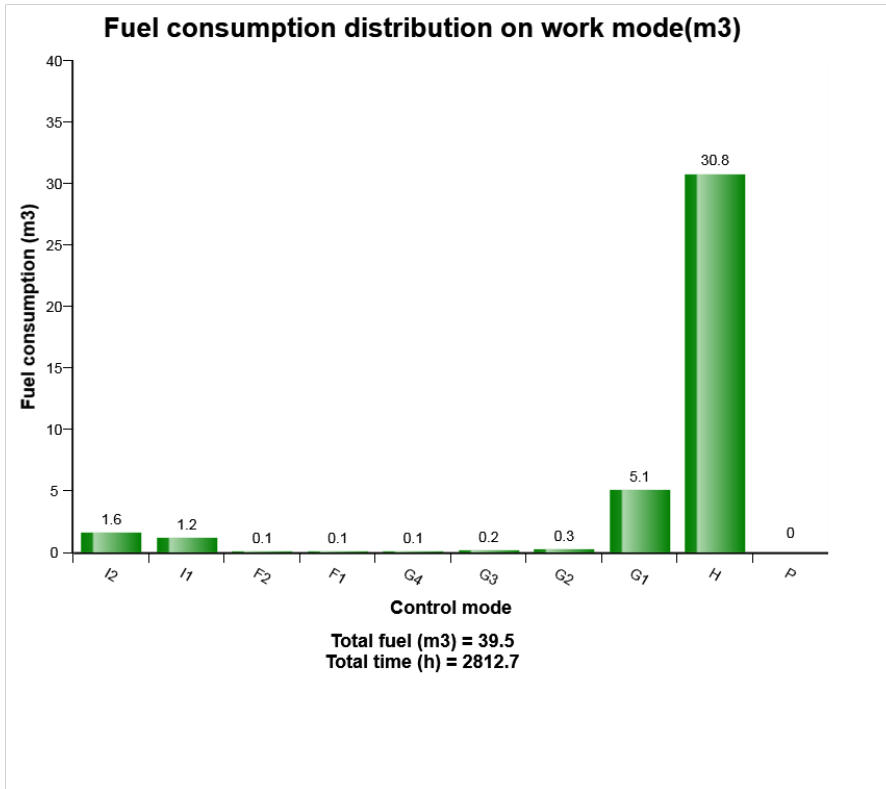
### Average fuel consumption per work mode



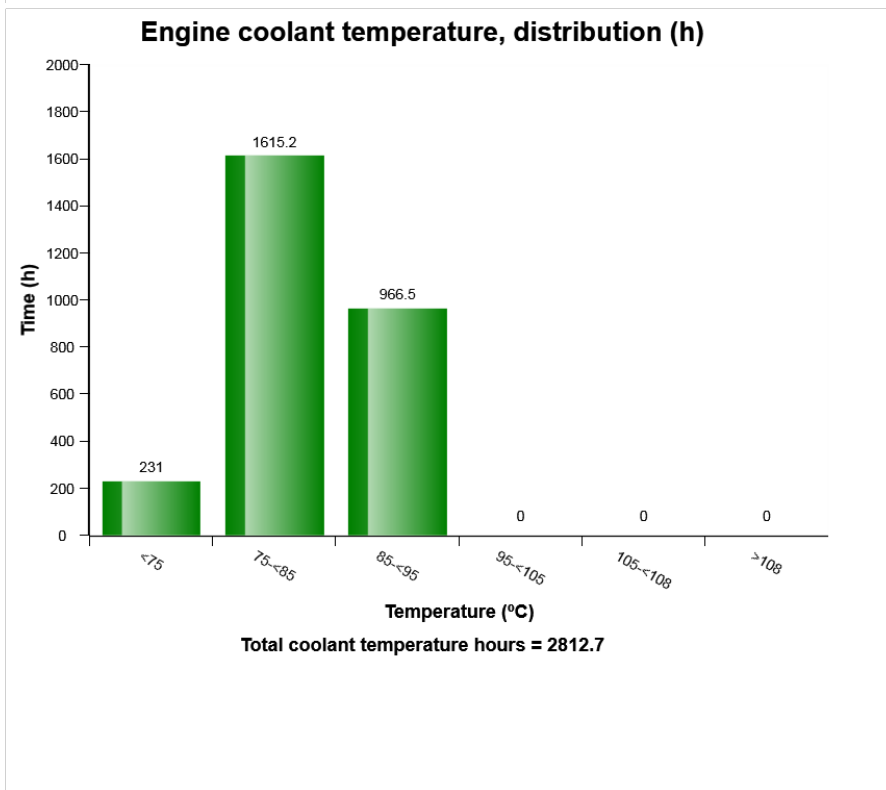
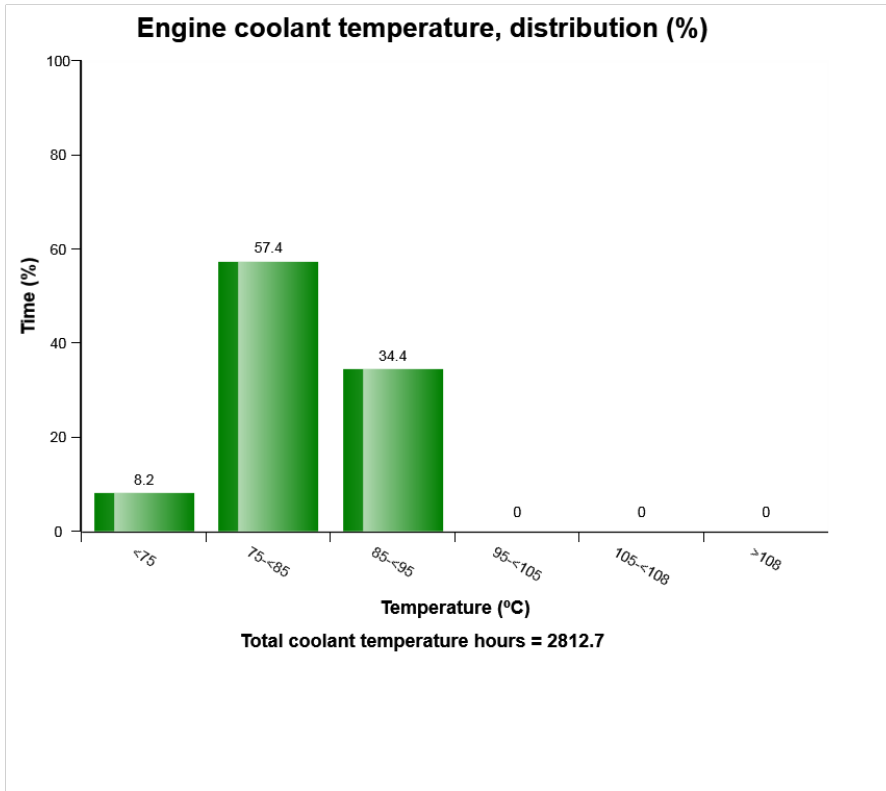
Fuel consumption (L/h) = 14.0  
Amount of fuel used (m3) = 39.5



Machine model	SerialNo	Operating Hours	Reading Date
EC250E	310117	2814.2	6/8/2018

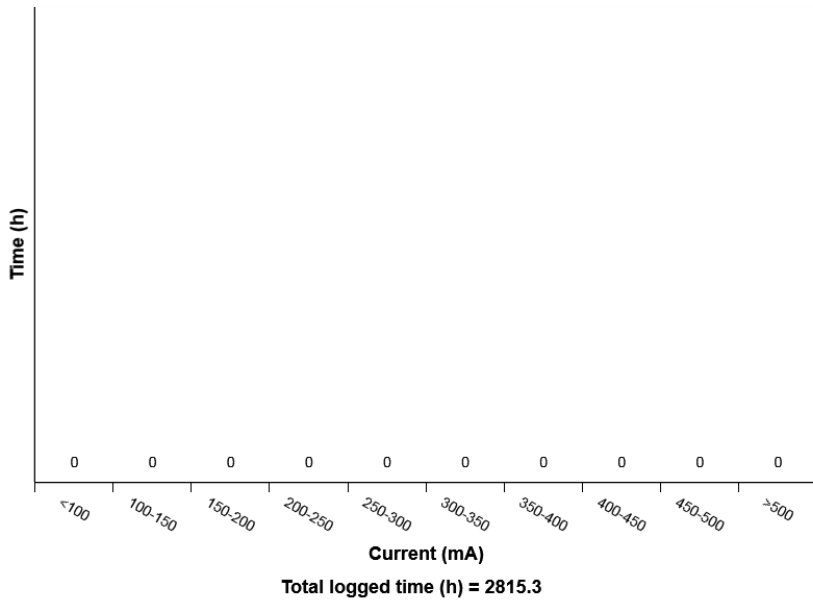


Machine model	SerialNo	Operating Hours	Reading Date
EC250E	310117	2814.2	6/8/2018

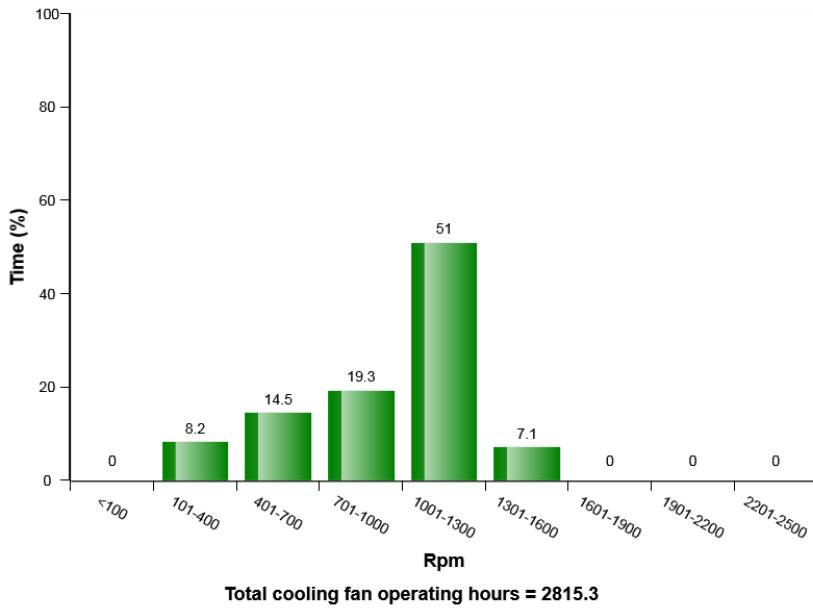


Machine model	SerialNo	Operating Hours	Reading Date
EC250E	310117	2814.2	6/8/2018

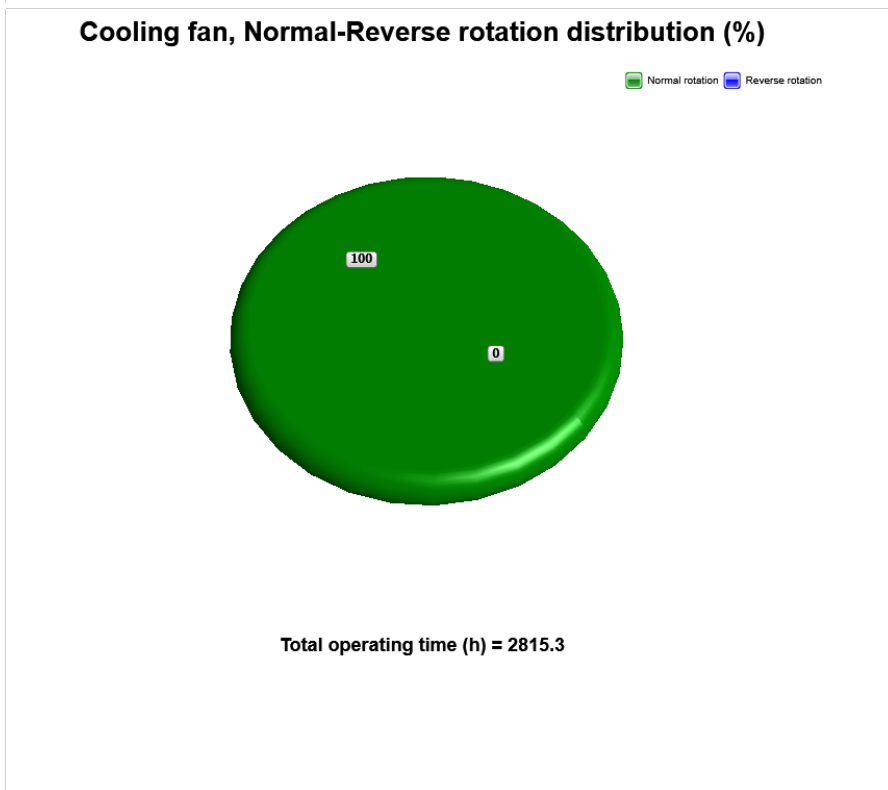
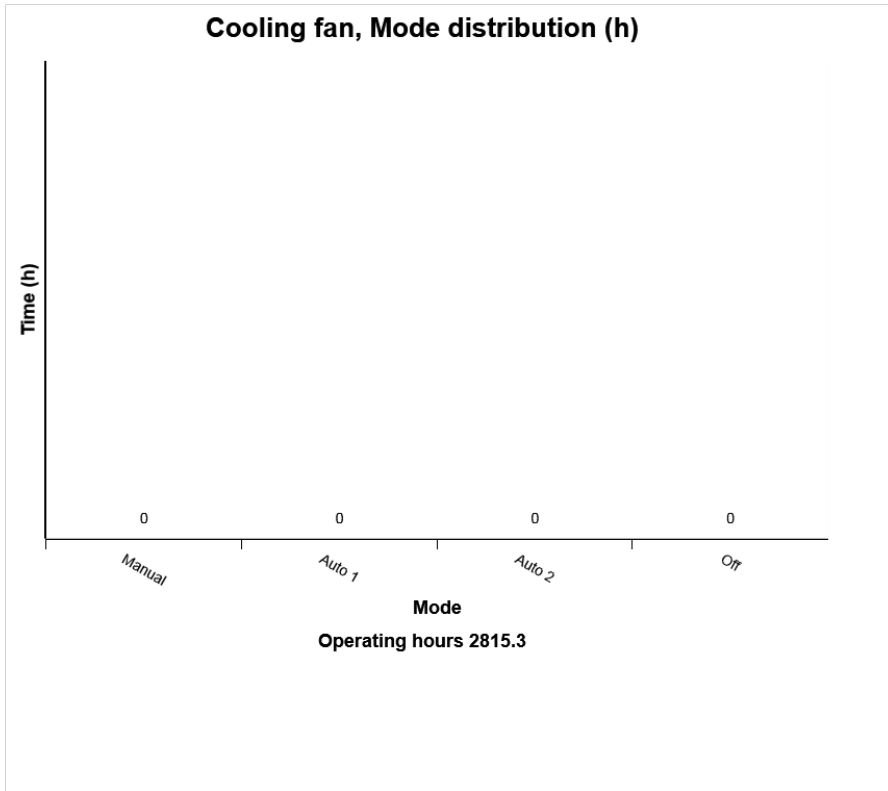
### Cooling Fan, speed control current distribution(h)



### Cooling fan (clutch type) speed distribution (%)

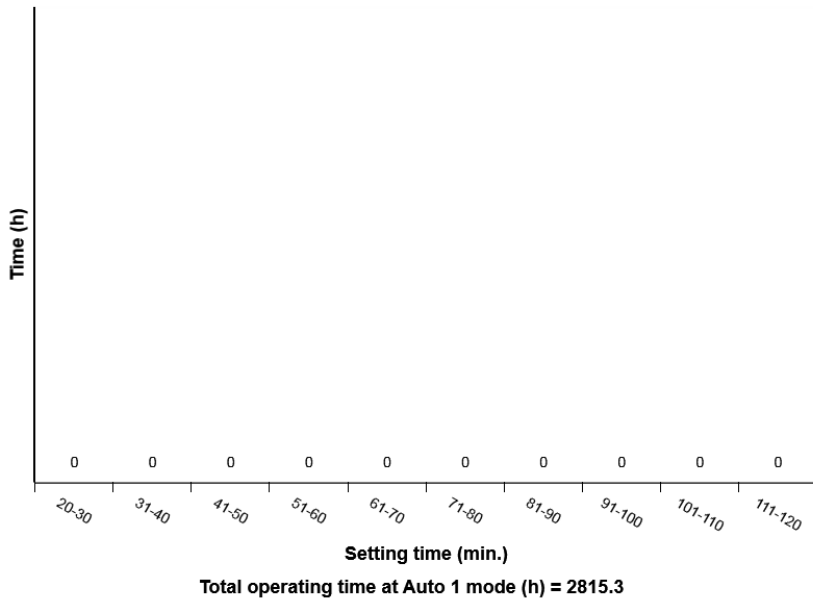


Machine model	SerialNo	Operating Hours	Reading Date
EC250E	310117	2814.2	6/8/2018

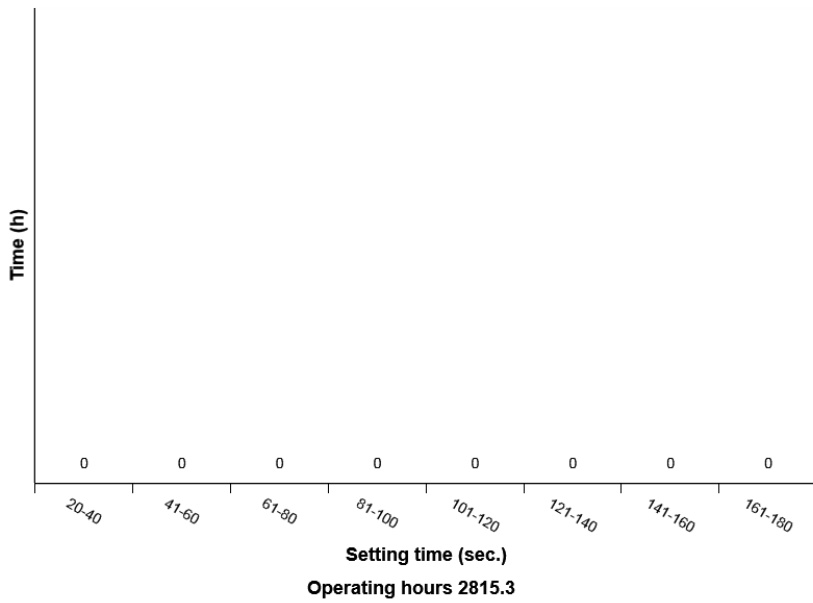


Machine model	SerialNo	Operating Hours	Reading Date
EC250E	310117	2814.2	6/8/2018

**Reversible fan, Time setting distribution (h) at Auto 1 mode**

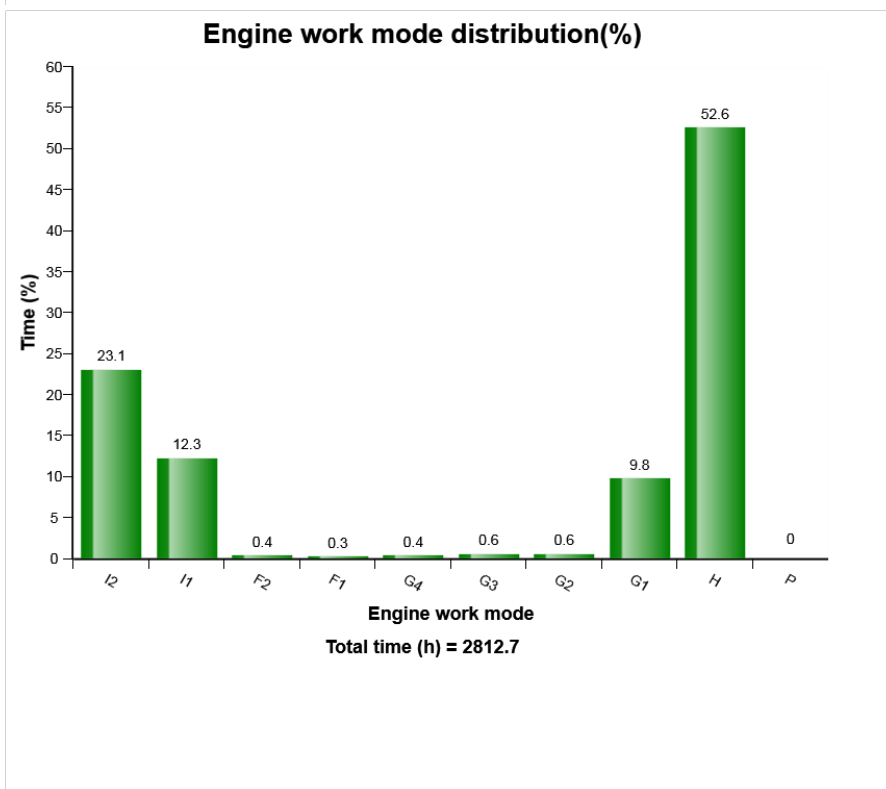
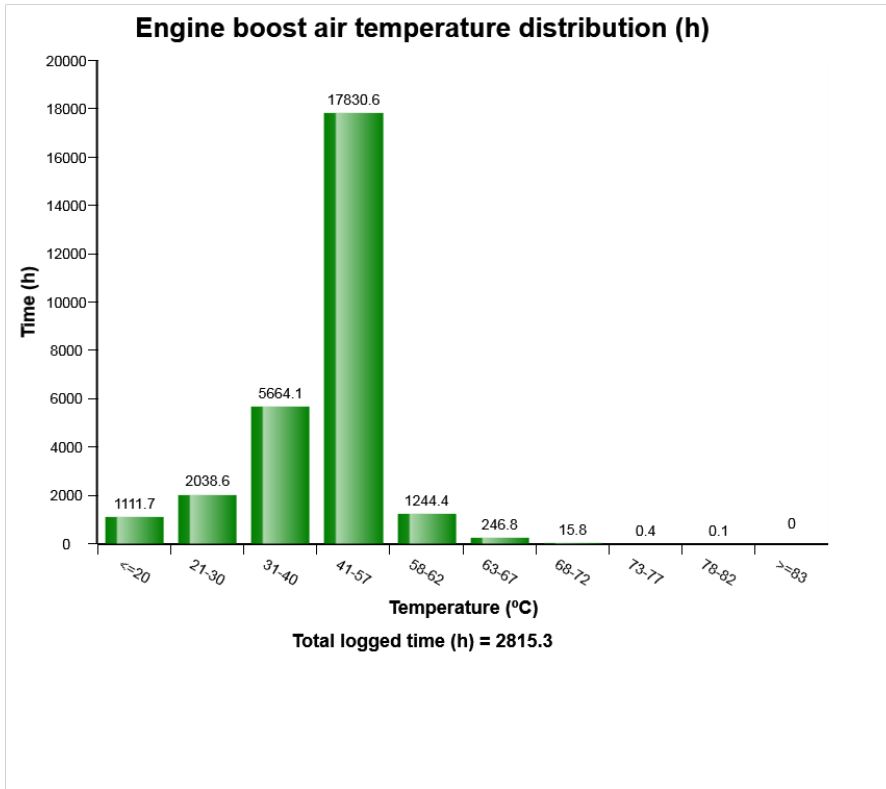


**Reversible fan, Time setting distribution (h) at Manual mode**

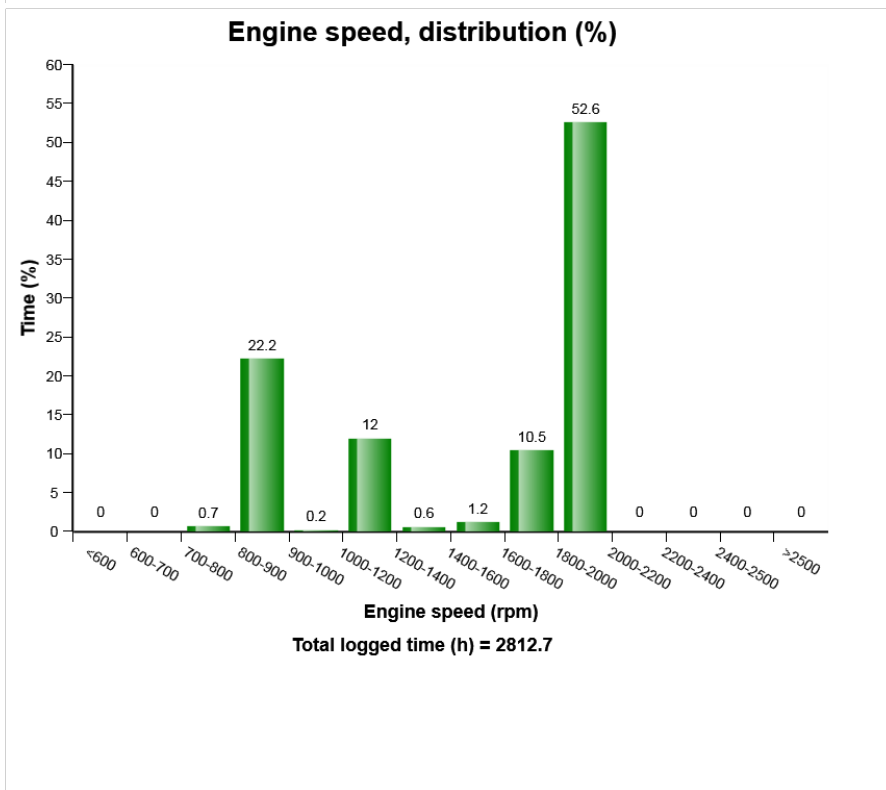
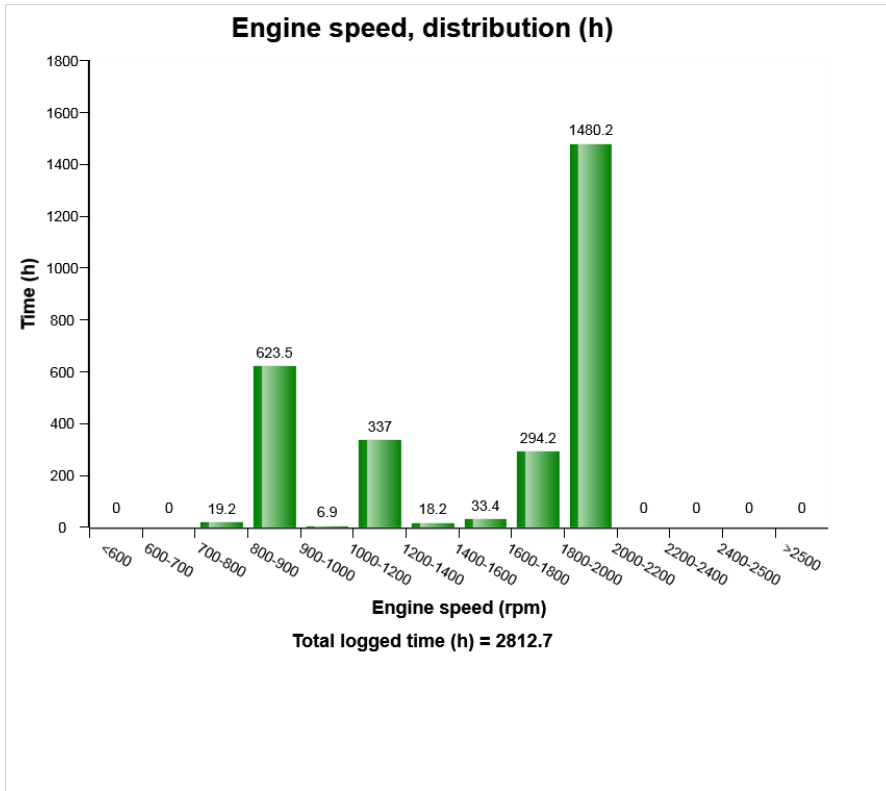




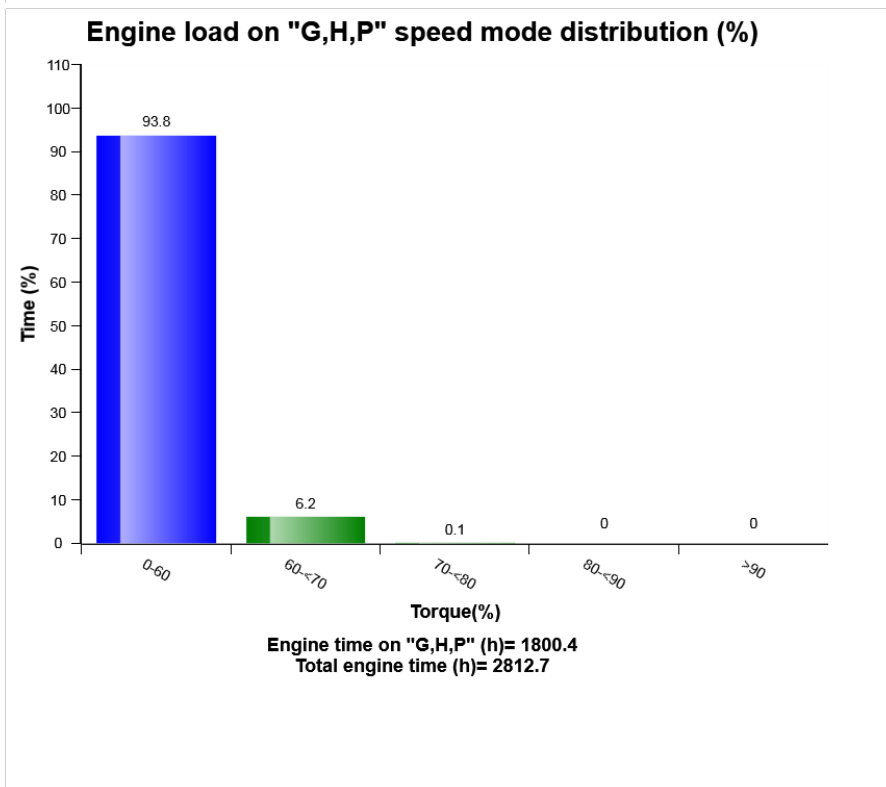
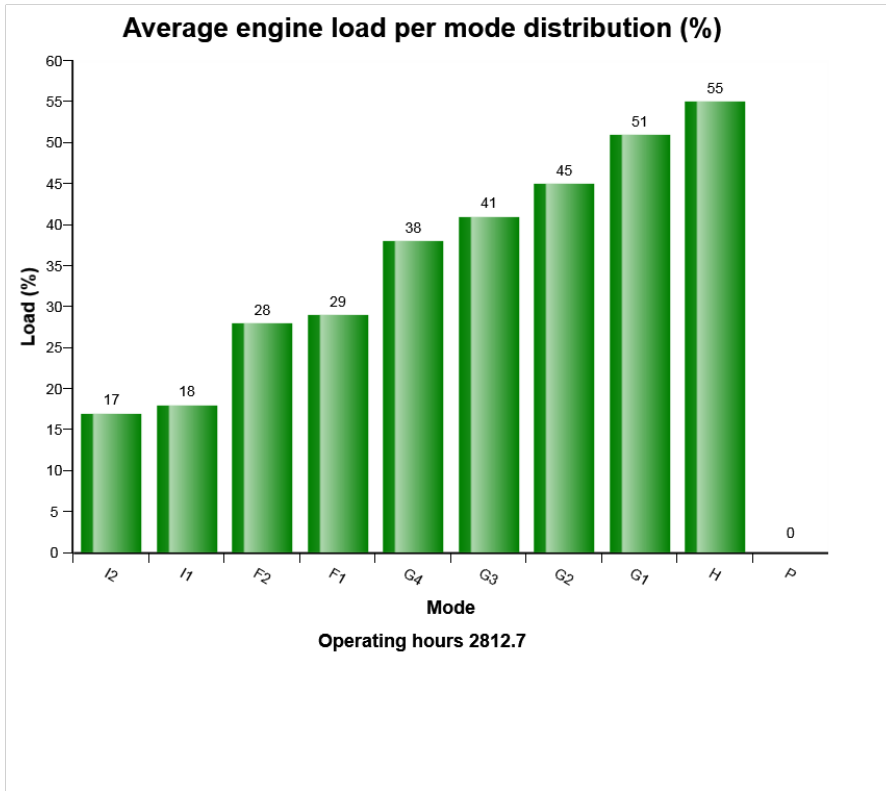
Machine model	SerialNo	Operating Hours	Reading Date
EC250E	310117	2814.2	6/8/2018



Machine model	SerialNo	Operating Hours	Reading Date
EC250E	310117	2814.2	6/8/2018

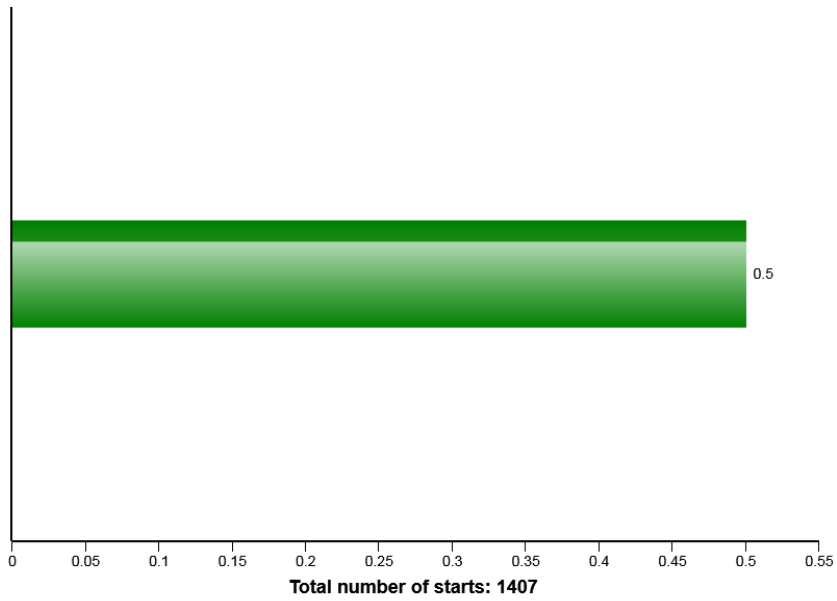


Machine model	SerialNo	Operating Hours	Reading Date
EC250E	310117	2814.2	6/8/2018

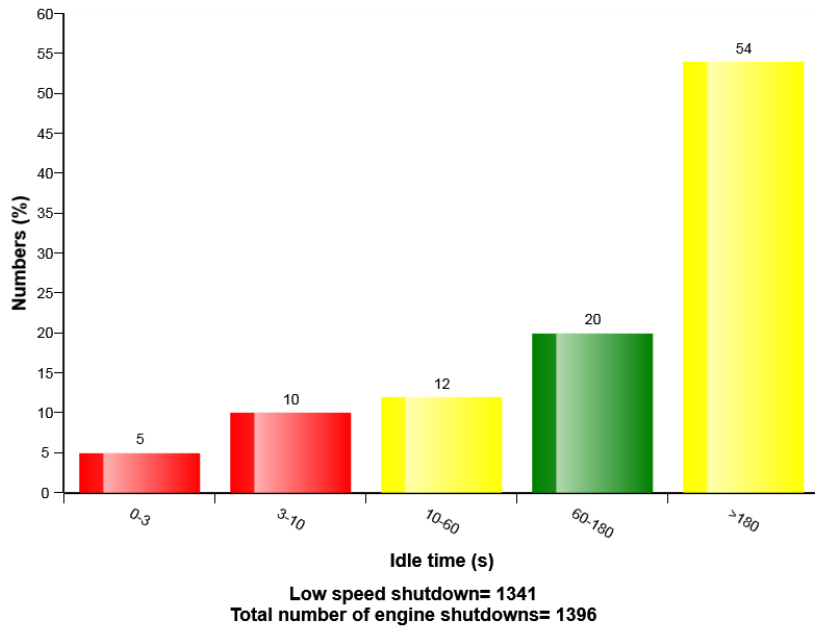


Machine model	SerialNo	Operating Hours	Reading Date
EC250E	310117	2814.2	6/8/2018

### Average number of starts per hour

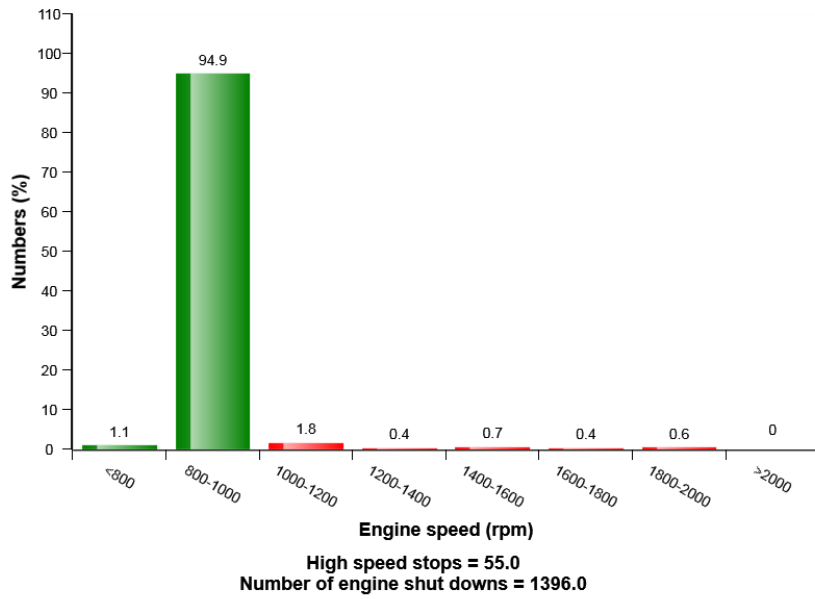


### Idle time before shut down (%)

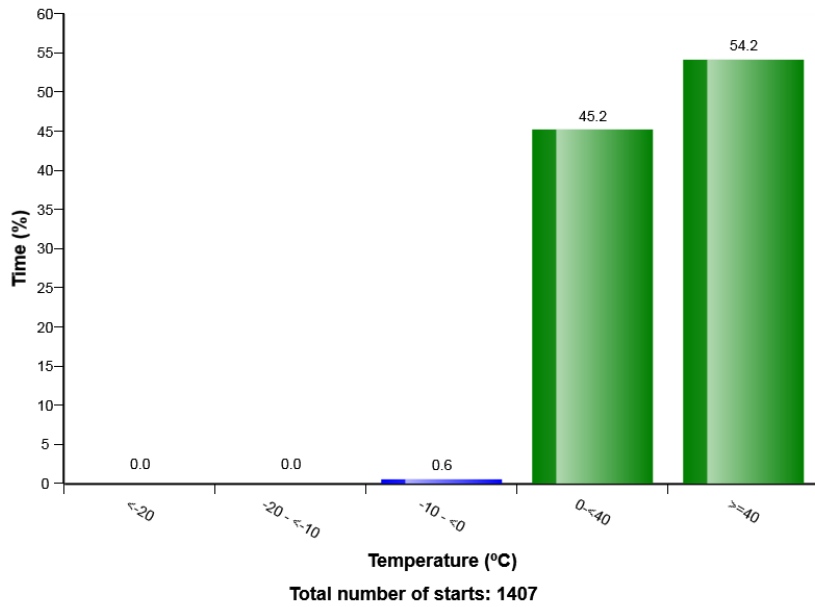


Machine model	SerialNo	Operating Hours	Reading Date
EC250E	310117	2814.2	6/8/2018

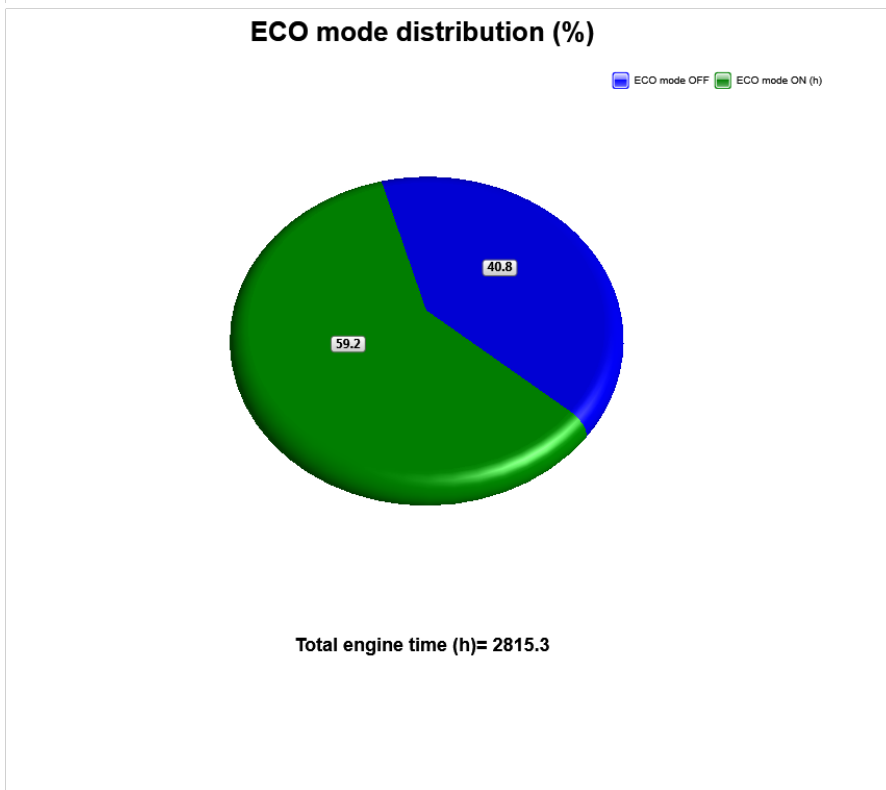
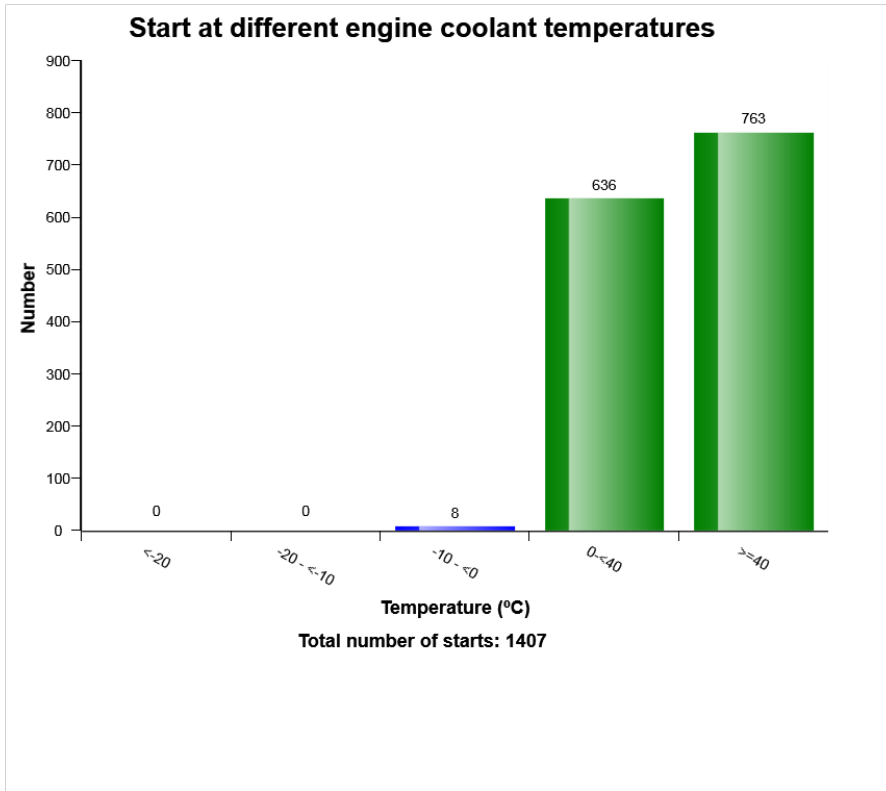
### Engine shut down numbers per engine speed mode distribution (%)



### Start at different engine coolant temperatures (%)



Machine model	SerialNo	Operating Hours	Reading Date
EC250E	310117	2814.2	6/8/2018



Machine model	SerialNo	Operating Hours	Reading Date
EC250E	310117	2814.2	6/8/2018

**Low coolant level**  
**Total number of occurrences = 2560**

Op hours	Year	Month	Day	Hour	Minute	Duration (minutes)
* 8	2015	1	3	18	108	35
* 52	2016	1	3	18	108	21
* 3101	2014	23	4	18	199	1
* 4362	2014	27	4	18	210	1
* 4869	2008	1	5	18	217	0
* 4885	2014	27	4	18	211	1
* 6197	2015	25	4	18	203	0
* 6699	2017	1	3	18	109	1
* 6927	2007	2	3	18	109	3
* 7197	2015	25	4	18	203	4
* 7722	2016	1	3	18	109	8
* 8506	2015	25	4	18	203	0
* 9260	2007	2	3	18	109	14
* 10809	2016	1	3	18	109	19
* 11787	2008	2	3	18	109	0
* 11797	2014	1	3	18	108	6
* 13321	2017	1	3	18	109	1
* 13615	2008	4	5	18	237	0
* 13841	2009	2	3	18	109	11
* 14093	2014	19	4	18	175	0















Machine model	SerialNo	Operating Hours	Reading Date
EC250E	310117	2814.2	6/8/2018

**Regeneration aborted**  
**Total number of occurrences = 3328**

Op hours	Year	Month	Day	Hour	Minute	Reason
* 0	2000	0	0	0	0	0
* 0	2000	0	0	0	0	0
* 0	2000	0	0	0	0	0
* 0	2000	0	0	0	0	0
* 0	2000	0	0	0	0	0
* 0	2000	0	0	0	0	0
* 0	2000	0	0	0	0	0
* 0	2000	0	0	0	0	0
* 1582	2010	6	3	17	12	2
* 2056	2016	7	9	16	220	2
* 2330	2016	7	9	16	220	2
* 3840	2010	6	3	17	12	1
* 4619	2016	7	9	16	220	2
* 9527	2015	7	9	16	220	2
* 9749	2015	6	3	17	13	2
* 10542	2015	6	3	17	13	2
* 11302	2015	6	3	17	13	2
* 12577	2015	7	9	16	220	2
* 14092	2009	6	3	17	12	2
* 14869	2015	7	9	16	220	2
* 14892	2009	6	3	17	12	2



Machine model	SerialNo	Operating Hours	Reading Date
EC250E	310117	2814.2	6/8/2018

**Regeneration ignored**  
**Total number of occurrences = 3840**

Op hours	Year	Month	Day	Hour	Minute	Duration (min)
* 0	2000	0	0	0	0	0
* 0	2000	0	0	0	0	0
* 0	2000	0	0	0	0	0
* 0	2000	0	0	0	0	0
* 0	2000	0	0	0	0	0
* 518	2017	30	6	17	54	48
* 524	2013	27	12	17	9	40
* 1314	2014	8	9	16	226	42
* 2822	2013	8	9	16	226	1
* 4661	2008	14	11	16	58	40
* 5121	2008	1	7	17	55	50
* 7438	2015	7	9	16	220	159
* 8745	2007	3	8	16	5	43
* 10510	2007	8	9	16	222	229
* 11787	2015	6	3	17	13	6
* 13349	2009	6	3	17	12	22
* 13610	2015	6	3	17	13	0
* 14092	2015	6	3	17	13	42
* 14853	2014	6	3	17	12	1
* 15161	2014	6	3	17	12	46



Machine model	SerialNo	Operating Hours	Reading Date
EC250E	310117	2814.2	6/8/2018

**Regeneration duration**  
**Total number of occurrences = 3328**

Op hours	Year	Month	Day	Hour	Minute	Duration (min)
* 0	2000	0	0	0	0	0
* 0	2000	0	0	0	0	0
* 0	2000	0	0	0	0	0
* 0	2000	0	0	0	0	0
* 0	2000	0	0	0	0	0
* 0	2000	0	0	0	0	0
* 0	2000	0	0	0	0	0
* 0	2000	0	0	0	0	0
* 535	2013	27	12	17	9	40
* 776	2010	6	3	17	12	12
* 1581	2014	8	9	16	226	40
* 2332	2015	6	3	17	13	35
* 4662	2008	14	11	16	58	40
* 7692	2008	1	7	17	55	40
* 7699	2015	7	9	16	220	8
* 9483	2007	3	8	16	5	40
* 10244	2015	7	9	16	220	9
* 12055	2015	6	3	17	13	5
* 13577	2009	6	3	17	12	6
* 13881	2015	7	9	16	220	23
* 14366	2015	6	3	17	13	41

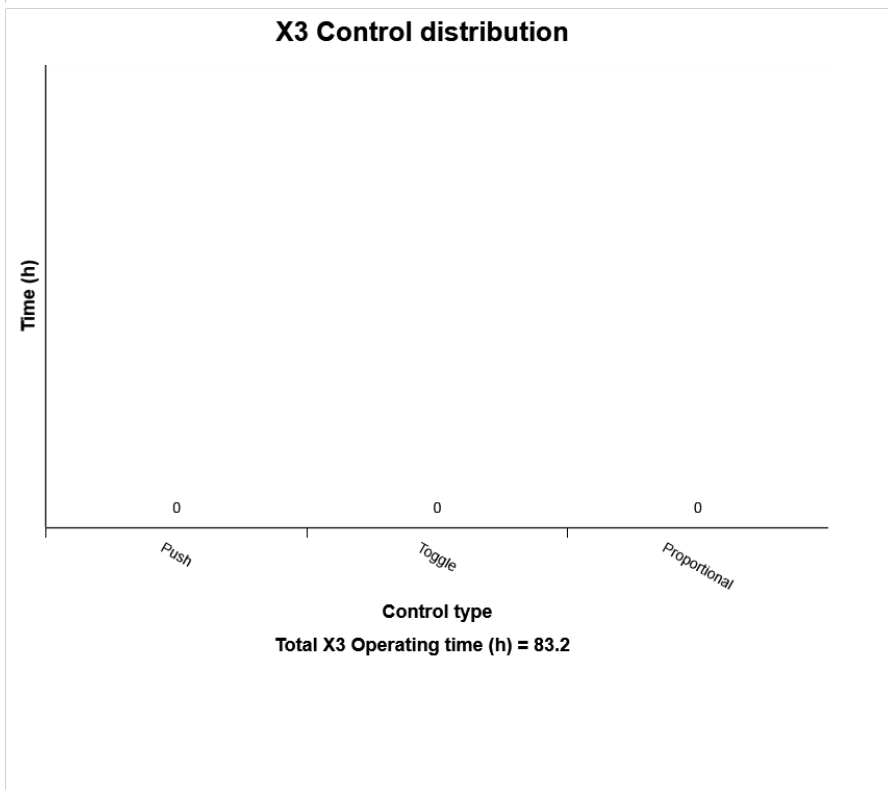
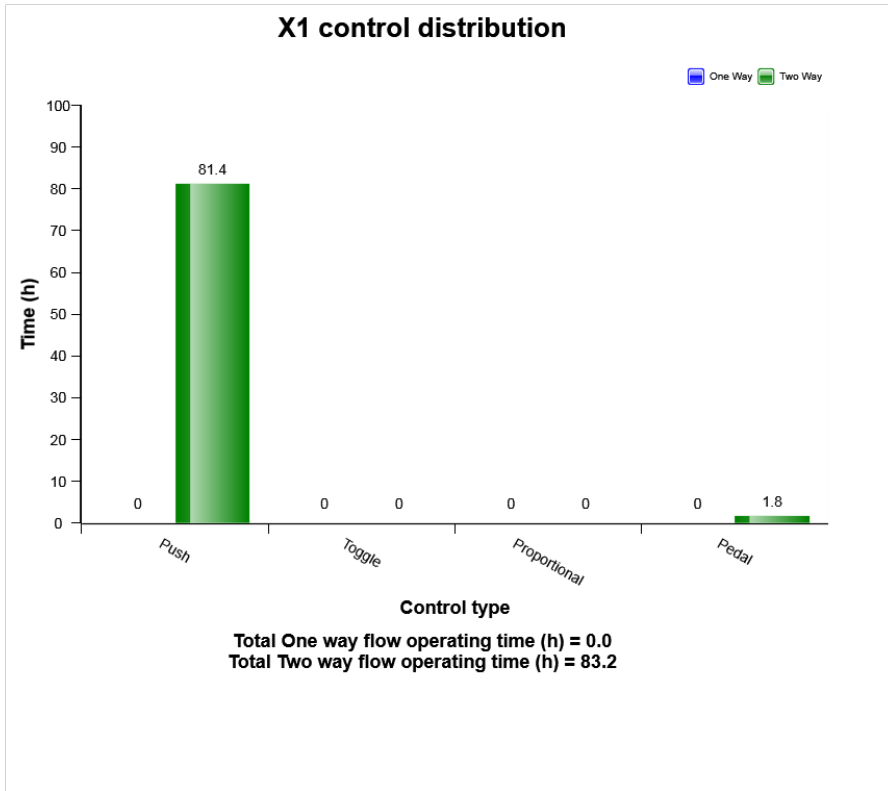




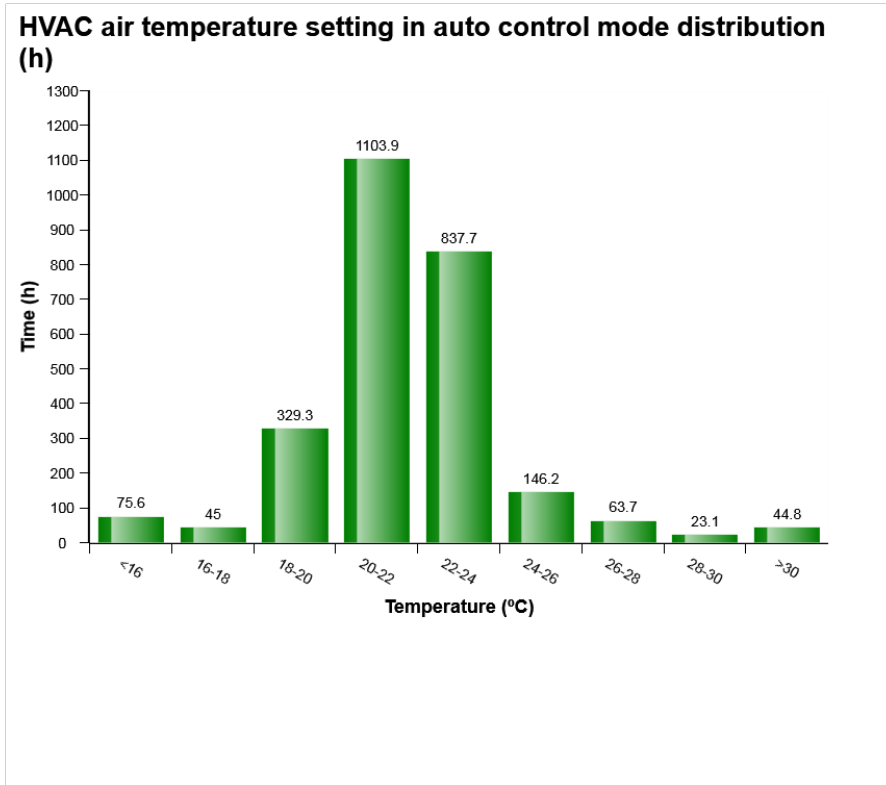
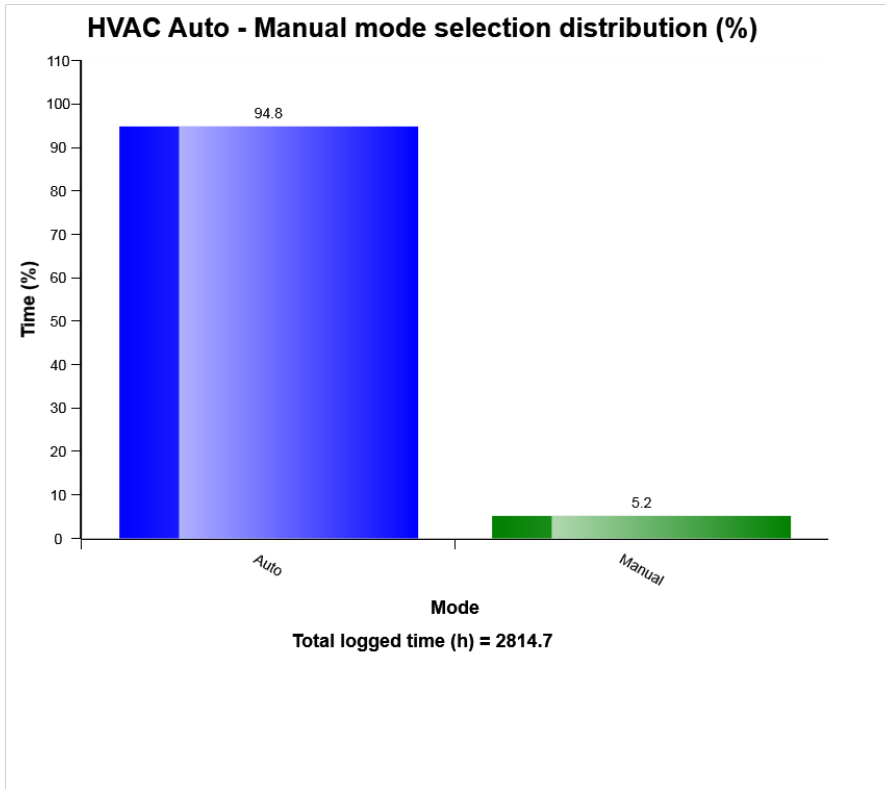




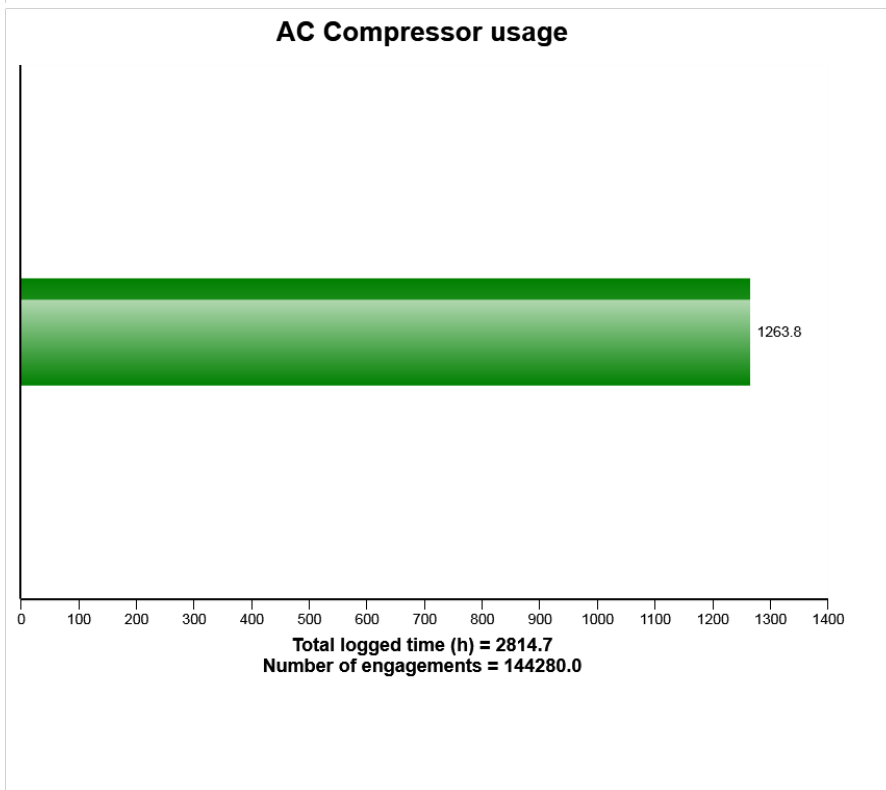
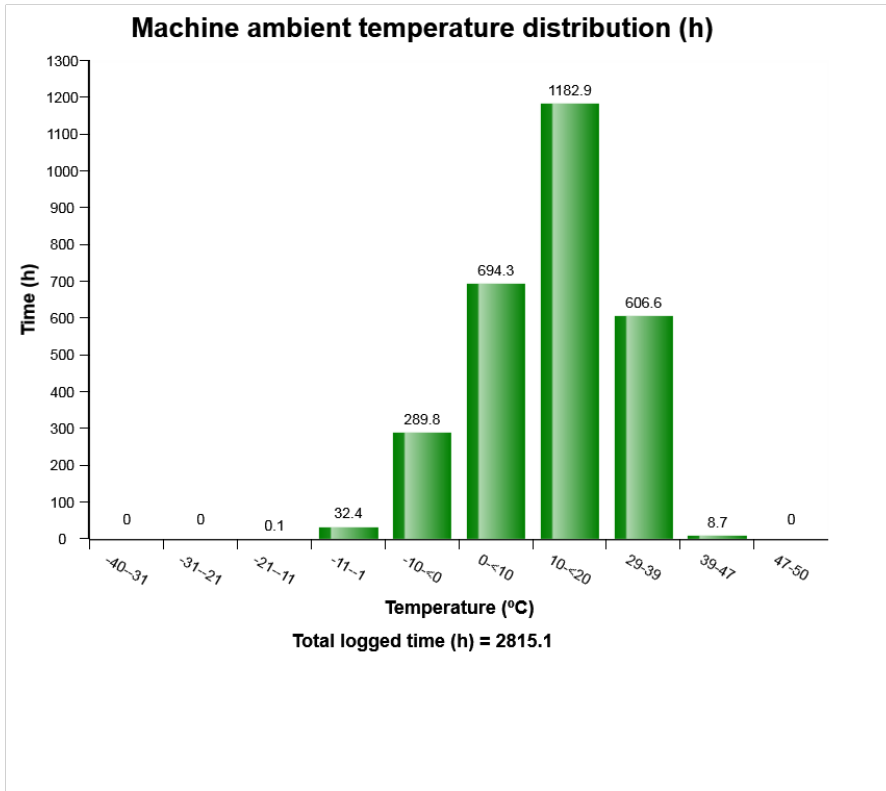
Machine model	SerialNo	Operating Hours	Reading Date
EC250E	310117	2814.2	6/8/2018



Machine model	SerialNo	Operating Hours	Reading Date
EC250E	310117	2814.2	6/8/2018

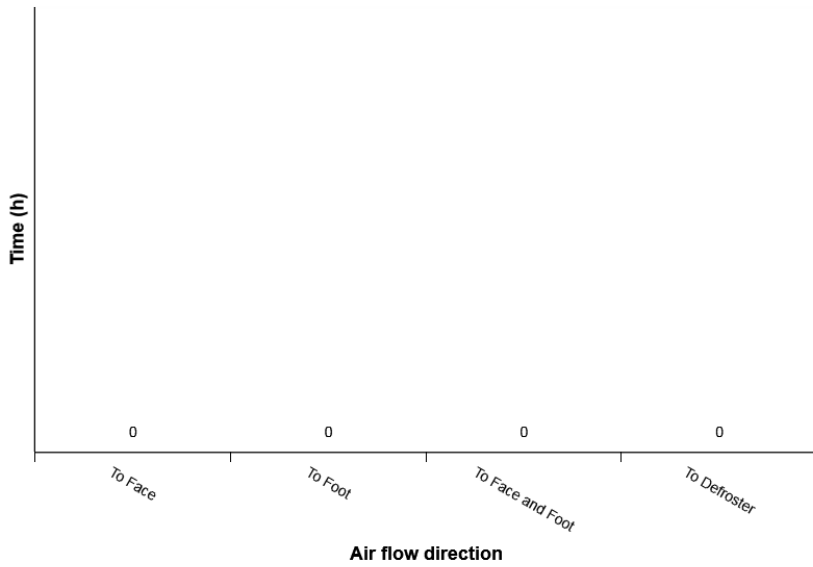


Machine model	SerialNo	Operating Hours	Reading Date
EC250E	310117	2814.2	6/8/2018

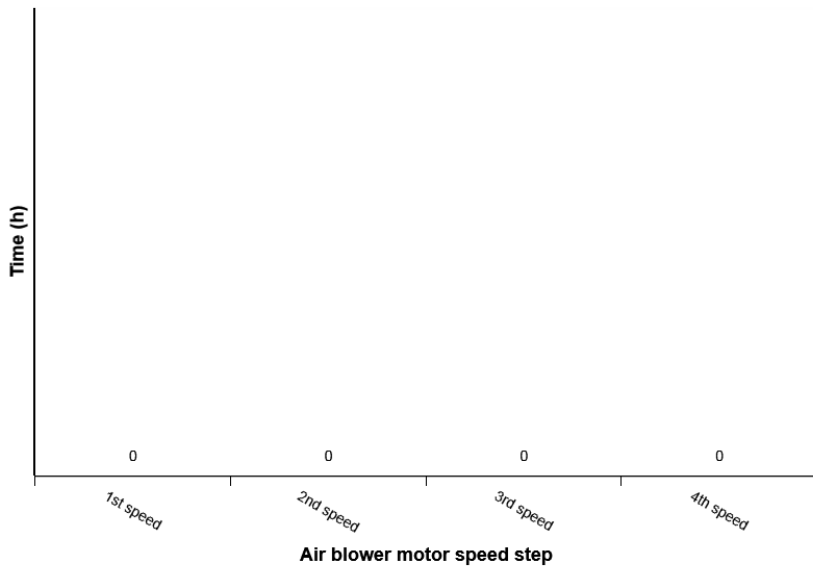


Machine model	SerialNo	Operating Hours	Reading Date
EC250E	310117	2814.2	6/8/2018

### HVAC air flow direction in manual mode distribution (h)



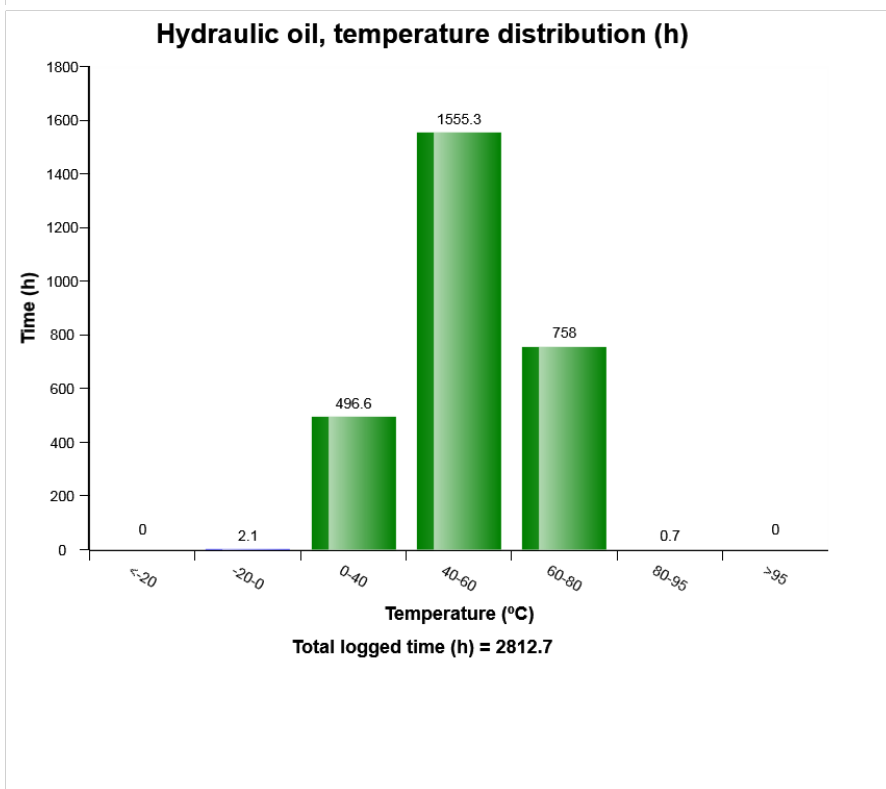
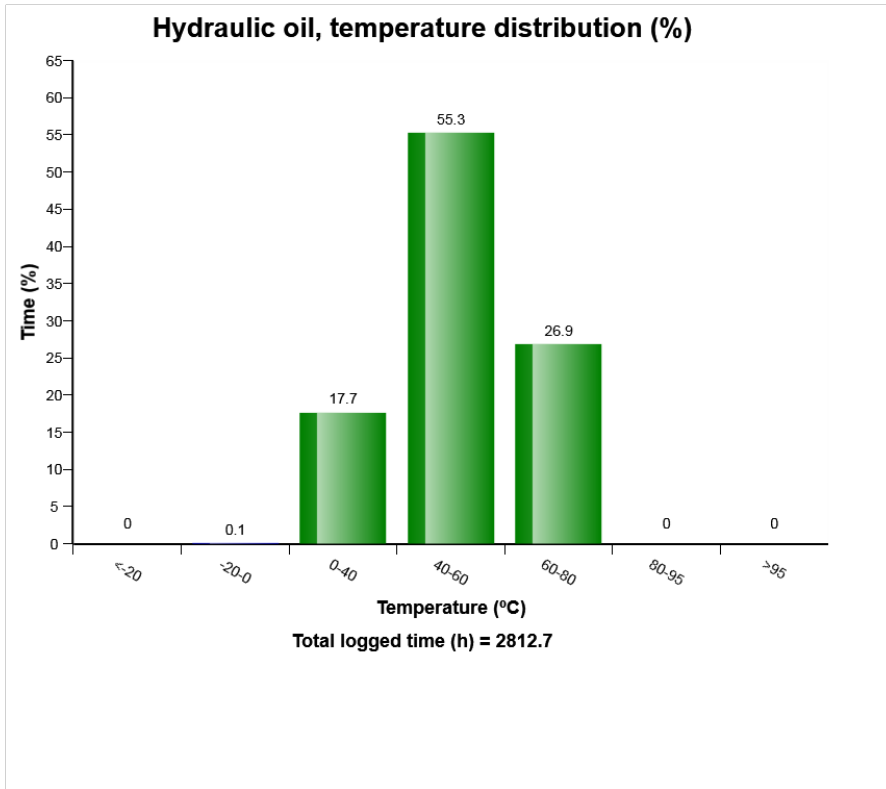
### HVAC air blower motor speed in manual mode distribution (h)







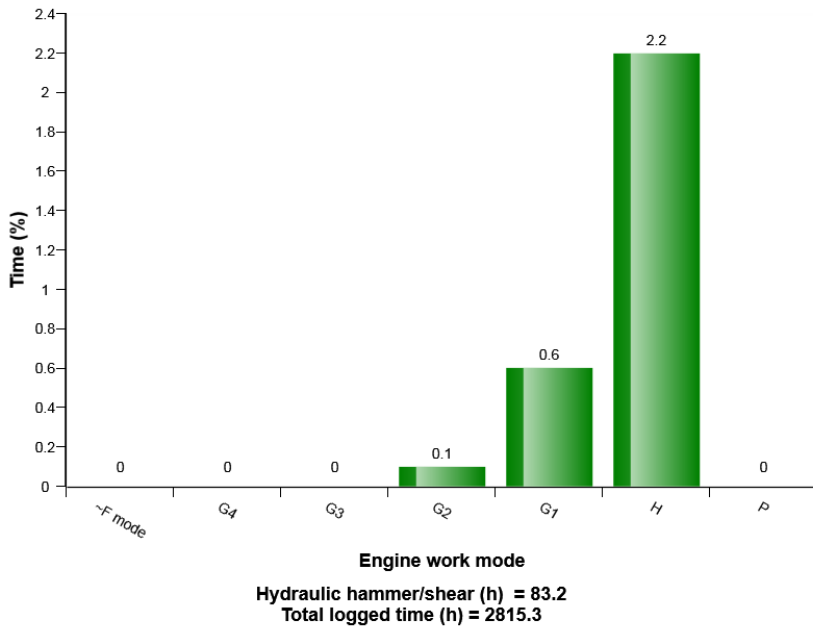
Machine model	SerialNo	Operating Hours	Reading Date
EC250E	310117	2814.2	6/8/2018



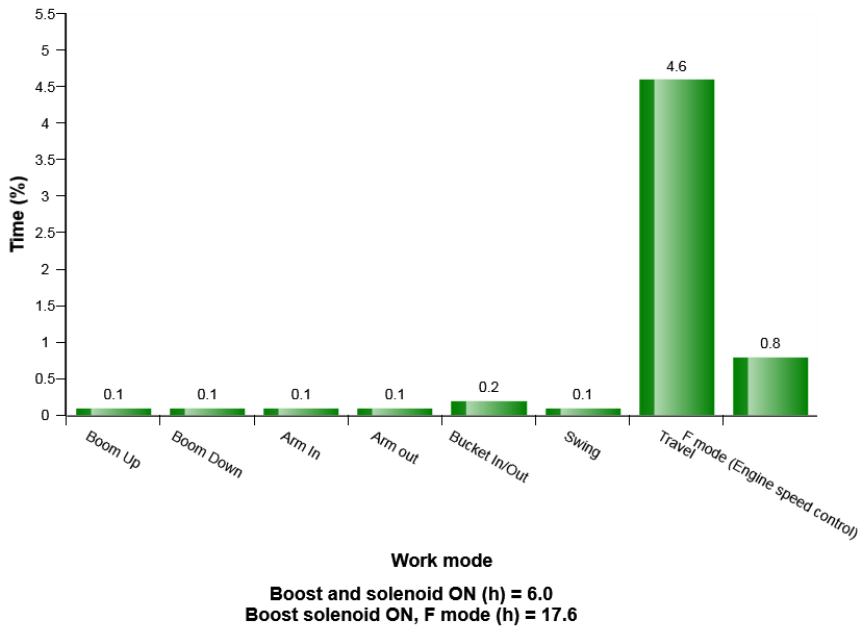


Machine model	SerialNo	Operating Hours	Reading Date
EC250E	310117	2814.2	6/8/2018

### Hydraulic hammer/shear, operating distribution on mode(%)



### Hydraulic Power boosted working operation distribution (%)



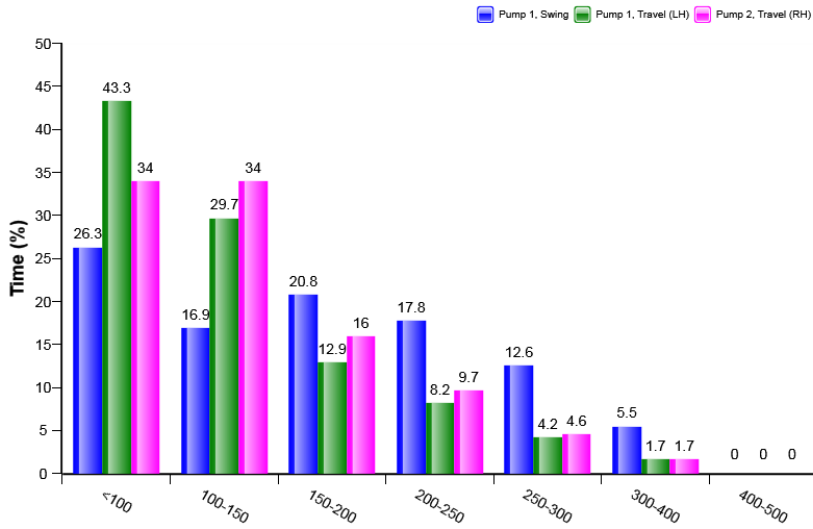
Machine model	SerialNo	Operating Hours	Reading Date
EC250E	310117	2814.2	6/8/2018

### Travel speed, high/low (%)



Total travel time (h) = 252.0  
Travel time / Operating hours (%) = 9.0

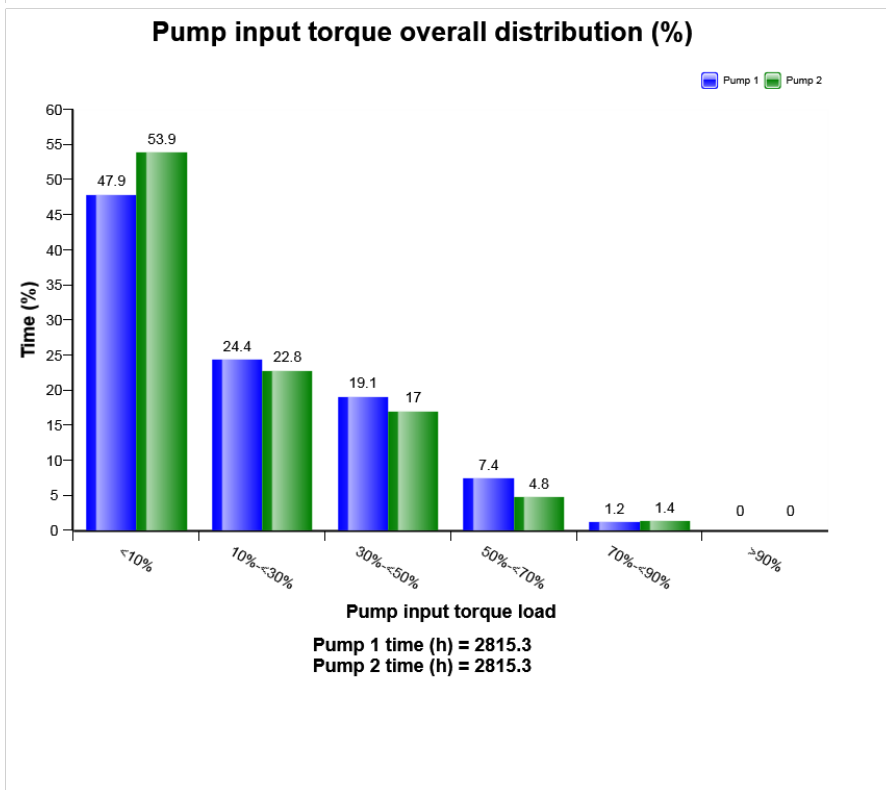
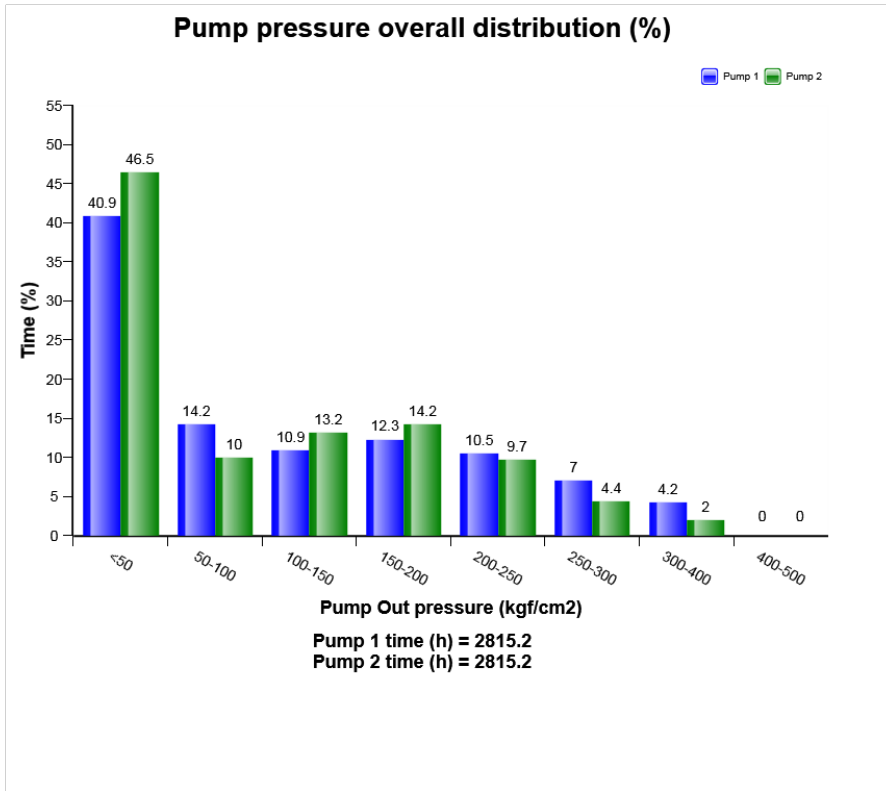
### Pump pressure on travel and swing distribution (%)



Pump Out pressure (kgf/cm2)  
Swing time (h) = 1330.7  
Travel (RH) time (h) = 242.5

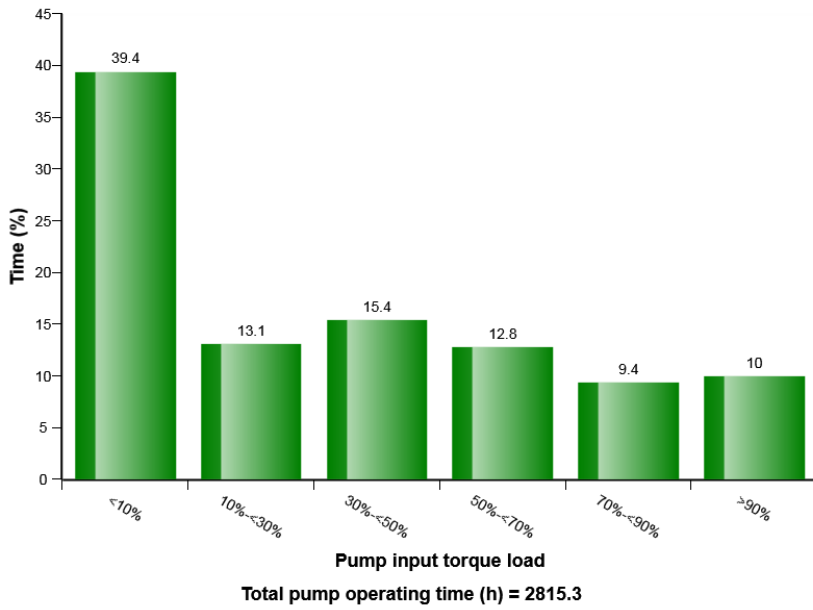


Machine model	SerialNo	Operating Hours	Reading Date
EC250E	310117	2814.2	6/8/2018

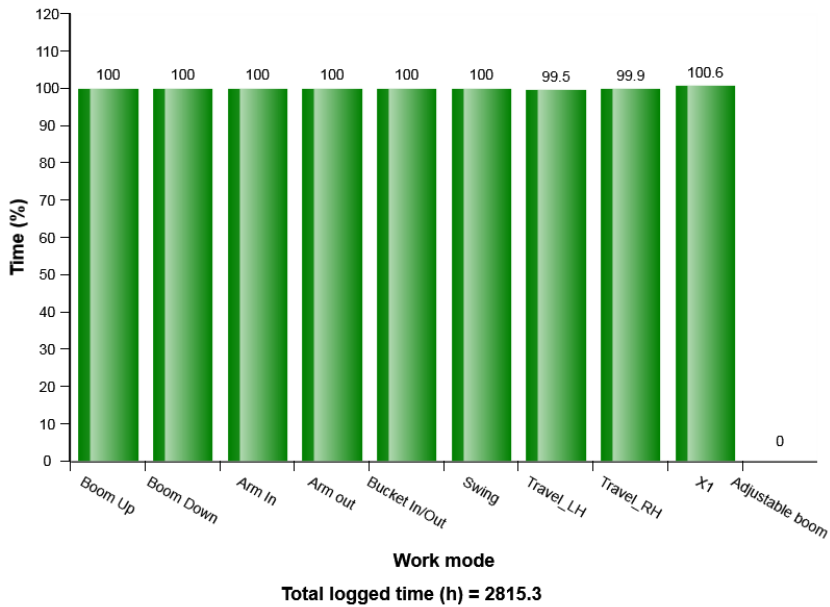


Machine model	SerialNo	Operating Hours	Reading Date
EC250E	310117	2814.2	6/8/2018

**Pump torque load for 2 pump interaction distribution (%)**

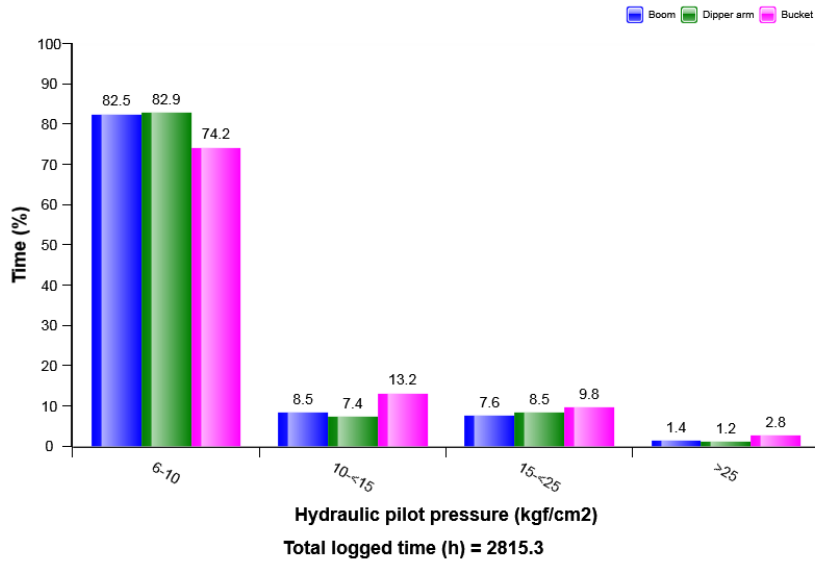


**Hydraulic working mode distribution (%)**

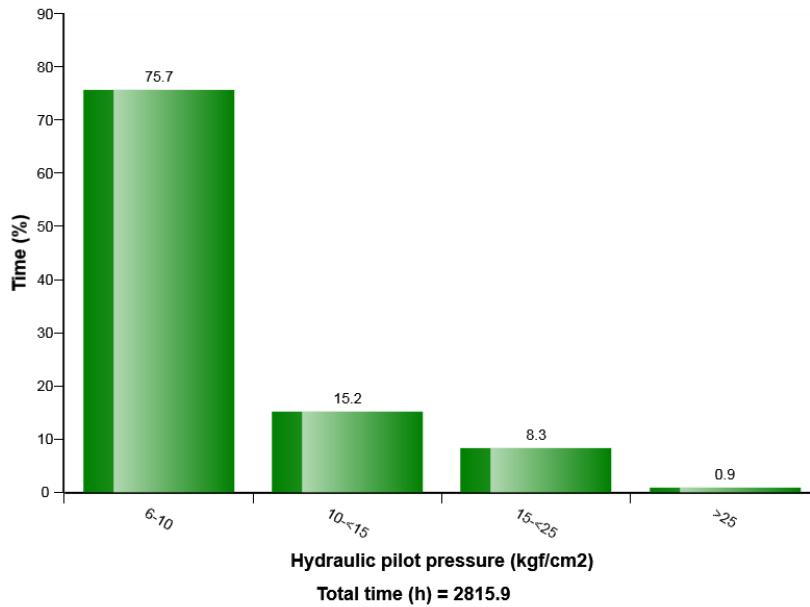


Machine model	SerialNo	Operating Hours	Reading Date
EC250E	310117	2814.2	6/8/2018

### Hydraulic pilot pressure on bucket, boom and arm operation distribution (%)



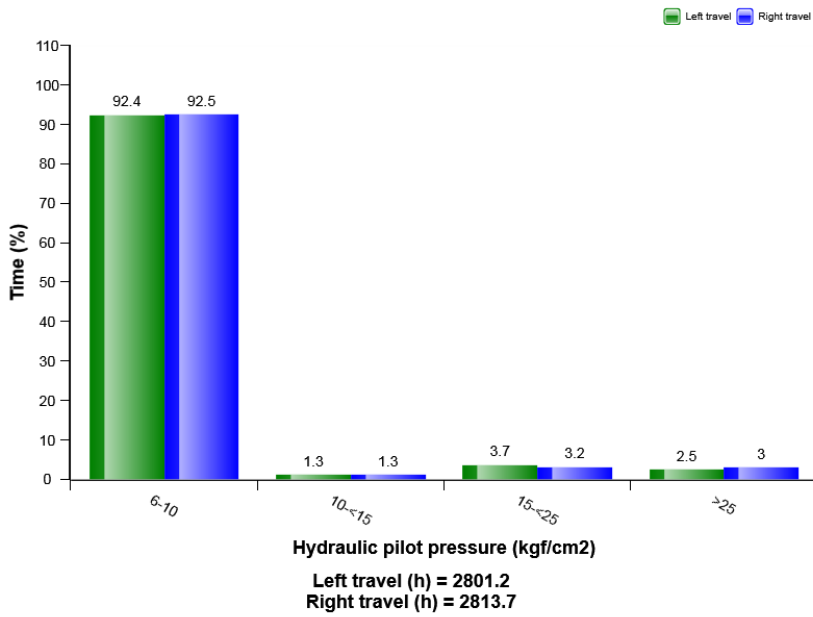
### Hydraulic pilot pressure on swing operation distribution (%)



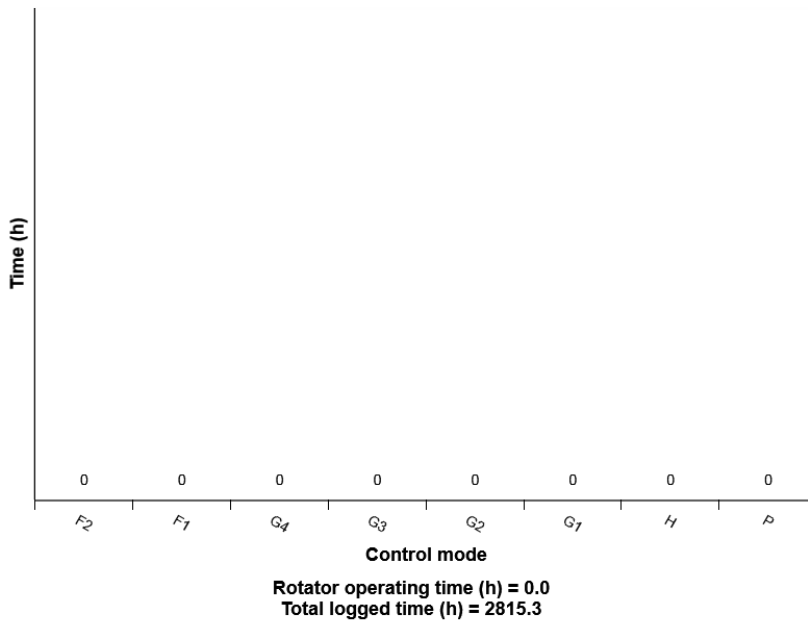


Machine model	SerialNo	Operating Hours	Reading Date
EC250E	310117	2814.2	6/8/2018

### Hydraulic pilot pressure on travel operation distribution (%)



### Rotator operation on engine speed mode distribution (h)



Machine model	SerialNo	Operating Hours	Reading Date
EC250E	310117	2814.2	6/8/2018

